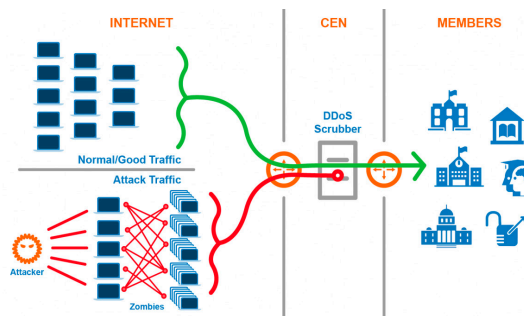


Member Spotlight

EdAdvance Partners with CEN to Defend the Network

For 20 years, CEN and EdAdvance, the Regional Educational Service Center (RESC) in western Connecticut, have partnered to provide CEN's dedicated fiber Internet access to EdAdvance's students, educators, and staff in Litchfield, CT. In recent years, this partnership has expanded to provide CEN services to additional EdAdvance locations in Torrington, Danbury, and Terryville. One of the primary driving forces for this growth has been the vital CEN security services providing 24x7x365 protection from the DDoS attacks that had been halting educational programming and administrative operations.

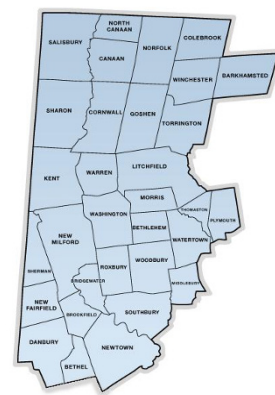
state's K-12 community, CEN built the DDoS Protection service into its Internet access offering at no additional cost to members.



The RESC Alliance and EdAdvance

EdAdvance has been a prominent supporter of the CEN community, from use of EdAdvance facility's for member town halls to their presence at the annual member conference. CEN and EdAdvance's robust partnership has opened doors for educational advancement throughout Connecticut.

In the 1990s, Connecticut's six RESCs formed the RESC Alliance to create greater access to resources and savings for all Connecticut public schools. Today, the RESCs collaborate to deliver an ever-growing variety of education resources and services that schools and communities couldn't otherwise afford. The RESC Alliance also advocates at the state legislature for laws that address and respond to the educational needs of all Connecticut residents.



"CEN has been an excellent partner to work with. They anticipated our needs before we fully understood them. We specifically selected them when opening our new buildings."

Jaren Havell
Director of Technology, EdAdvance

Defending Against DDoS

A distributed denial-of-service (DDoS) attack is a malicious attempt to disrupt the normal traffic of a targeted server, service or network by overwhelming the target or its surrounding infrastructure with a flood of Internet traffic. If not detected and mitigated, a DDoS attack can effectively shut down an organization's Internet traffic and bring a halt to its operations. As a very common problem in the

RESCs are:

- Created by Connecticut General Statute 10-66a on August 1, 1972
- Governed by local boards of education
- Dedicated to helping schools improve teaching, learning and student achievement
- Committed to providing high-quality, affordable education options for schools
- Focused on building regional partnerships that support public schools
- Operated independently in state-designated regions
- Partners with the Connecticut State Department of Education (CSDE) for Teaching and Learning

Closing the Digital Divide

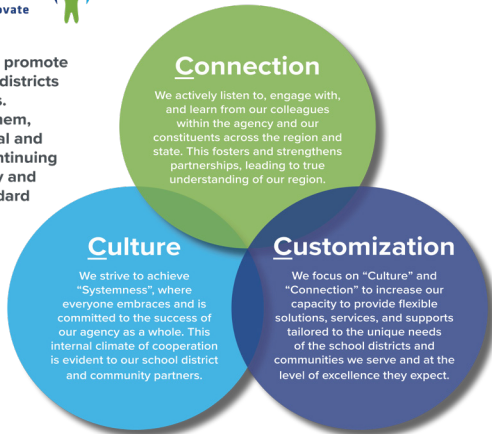
EdAdvance uses the CEN network connectivity to expand digital content and programs to students and teachers across the state. EdAdvance offerings include a broad range of programs and services that create opportunities for the sharing of important resources. By providing equitable access to learning, EdAdvance increases student engagement and success. This speaks to EdAdvance's mission, *to promote the success of school districts and their communities*. Just as CEN works collaboratively with EdAdvance to ensure top-tier connectivity, EdAdvance works with their members to ensure grade-A learning.



Redefining what a RESC can be!

EdAdvance exists to promote the success of school districts and their communities. Collaboratively with them, we provide educational and related services. A continuing commitment to quality and excellence is our standard of performance.

To achieve our mission, we are committed to the "Three Cs":



EdAdvancing Programs & Learning

In 2020, EdAdvance decided to utilize CEN for their Internet needs at several additional sites. The increased capacity and reliability of the CEN service has allowed EdAdvance to expand the programs at these sites and to reach more students.

Most recently, EdAdvance added CEN

to Partnership Learning Academy (PLA) in Terryville and Steps at East School in Torrington. The Special Education Programs offer personalized learning and behavioral programs in an inclusive and engaging environment for students grades K-5.

Similarly, EdAdvance and fellow RESC, Cooperative Educational Services, decided to partner with CEN for Internet and DDoS service for their collaborative project at WorkspaceCT in Bethel. WorkspaceCT has 32,000 square feet of space and the capabilities to offer a wide variety of facilities and programs including coding and virtual-reality gaming, studios and theater, music, recording, research labs, culinary arts, woodworking, conferencing and co-working spaces.

The CEN Advantage

CEN is unlike other Internet service providers. With a membership that includes community anchor institutions, like public K-12 and RESCs, from every community in Connecticut, a collaborative team is formed with CEN staff that designs, builds, and supports a suite of products and services tailored to their needs. Network performance, membership growth and loyalty, fiscal strength, and community engagement levels all attest to the continued success of this unique partnership model.



The CEN team knows that our members have choices for their Internet service. With the participation of our members, including EdAdvance, CEN has built a service that offers much more value including additional services like DDoS protection. It's a collaborative model that really works for all.

Paul Tarsa
CEN Member Services Manager

Connect With Us

